



IW  KRAMA
ANNUAL
REPORT
2025

2025

YEAR IN NUMBERS

1,500+

Visitors to the Iwokrama Forest

1,224 Ha

**Surveyed
Post Harvest**

70+

**Monitoring
Trips**

8

**New PSPs
Established**

55+

**University
Students**

400+ Youth

in 18 Wildlife Clubs

16

**Press Releases
Issued**

10

Schools Engaged

3

**New
Publications**

Table of Contents

A Message from our CEO	5
<hr/>	
A Message from our Chairman	7
<hr/>	
Tourism	9
<hr/>	
Forestry	11
<hr/>	
Training and Learning Services	13
<hr/>	
Community Engagement	15
<hr/>	

Table of Contents

Monitoring **17**

Science and Research **19**

Education, Awareness and Public Relations **21**

Projects **23**

Financials **27**

Partners **30**

New Publications **31**

A Message from Our CEO

2025 was a year of achievement for the Centre as we retained international certification, advanced eco-tourism, and reinforcing Guyana's leadership in rainforest conservation. We remain committed to balancing environmental stewardship, community and national development, and the sustainable use of forest resources so that Guyana's rainforest continues to serve as a global conservation model. During the year, Iwokrama also gained membership in the Global Biodiversity Alliance.

Our work continues to demonstrate Iwokrama's role as a "*conservation gift to the world*", consistent with the 1989 Langkawi Declaration on the Environment. We strengthened partnerships with Indigenous communities and international conservation organisations, expanded sustainable eco-tourism, enhanced research and monitoring to provide data-driven insights into rainforest health, and promoted global awareness of rainforest ecosystems. We also showcased Guyana's innovative conservation initiatives through high-level visits and participation in international conferences and events.

The FAO's Global Forest Resources Assessment 2025 notes "*An estimated 489 million ha of forest has been lost worldwide through deforestation since 1990, but the rate of loss has slowed...from 9.88 million ha per year in 2000–2015 to 6.78 million ha per year in the decade to 2025*".

This global context reinforces the relevance and success of Iwokrama's work in Sustainable Forest Management. The world needs a tried and tested conservation model that combines people, science and business. Guyana, despite a booming oil and gas industry, remains carbon negative and is committed to low carbon development through the Low Carbon Development Strategy (LCDS) 2030 – an innovative national development strategy that provides a model to balance conservation of Guyana's still 82% forest cover and natural assets with the oil and gas sector.

Our certified sustainable forestry operations strengthened during the year, with partners building capacity and the Centre successfully retaining FSC™ certification. Sustainable tourism maintained strong performance as weather conditions improved and access to Iwokrama increased, earning two awards for innovation and best accommodation. Our training programmes also expanded, including new educational groups such as Drexel University. In addition, a new board game was developed for our school outreach programme to introduce younger students to conservation.

Our partnership with the North Rupununi District Development Board (NRDDB) continued under the guidance of our Co-Management Agreement. Our signature Wildlife Clubs programme reached more than 400 youth across 18 communities. Support from the ExxonMobil Foundation enabled several conservation projects on the coast, through collaboration with EMC Inc., and in the hinterland. Our research programme advanced with key projects including post-harvest silvicultural surveys, Permanent Sample Plots, and hydrology and carbon analysis in partnership with Drexel University.

Our work was not without its challenges. Illegal activities, particularly mining driven by rising gold prices, continued to affect forest management. Working with the Ministry of Natural Resources, the Guyana Police Force, and the Guyana Geology and Mines Commission, monitoring and enforcement operations led to several arrests and prosecutions.

A Message from Our CEO

Long-term financial sustainability remains a priority as revenues are influenced by global travel trends and weather patterns. Competition from the oil and gas sector continues to affect staff retention, while climate change increases pressures on biodiversity and ecosystem stability.

These achievements would not have been possible without the contributions of our partners. We thank our founding partners—the Government of Guyana, which continues to provide an annual subvention, and the Commonwealth Secretariat. We also acknowledge the continued collaboration of the NRDDDB and our community partners, whose support remains vital to Iwokrama’s success.

We are grateful to EMC Inc. for their partnership and guidance, and to the ExxonMobil Foundation for its support from 2022–2025. We also continued engagement with our Patron, King Charles III. Finally, I extend sincere thanks to our dedicated staff for their continued commitment to the Centre.

Looking ahead to 2026, we will celebrate the 30th anniversary of the Iwokrama Act with the launch of an Iwokrama Coffee Table Book. We are also pleased to be part of establishing a Centre for Biodiversity Excellence, a joint initiative between the Government of Guyana and the Commonwealth Secretariat. In addition, we look forward to launching our corporate sponsorship programme.

I hope you enjoy this report. Please visit www.iwokrama.org or contact me at dgobin@iwokrama.org to learn more about our work.

Best wishes for a successful 2026.

Dane Gobin
Chief Executive Officer



A Message from Our Chairman

The Centre's work continues to be validated by the global reduction in biodiversity loss, reinforcing its standing as a leading global example of best practice forest management and biodiversity conservation.

Its work over the years, which has always been aligned with National Development Strategies such as the Low Carbon Development Strategy 2030, establishes that forests are worth more alive than dead and that you can use a forest without losing it.

Notable progress was made over the year in our work programmes – research and science, community relations, conservation and monitoring, business development and communications through strategic partnerships with Government and public and private agencies and NGOs. Our signature community programme, the Wildlife Clubs, has continued to have a very positive impact on the 400 + young people at the community level – paving the way for a new generation of community conservation leaders.

Illegal gold mining has continued to be a major challenge in the forest and we are grateful for the support from the Ministry of Natural Resources, its agencies and the security forces in Guyana for their support in curbing this bothersome activity. Our businesses of ecotourism and sustainable timber continue to build capacity as the weather and road conditions improve.

2026 is already shaping up to be exciting with the launch of our new coffee table book to celebrate the 30th Anniversary of the passage of the Iwokrama Act.



A Message from Our Chairman

I would like to thank the Government of Guyana, the Commonwealth Secretariat, the staff and the Centre's community partners and all those who have made contributions to the Centre for their support. The CEO and management team have continued to demonstrate their continued commitment to its success in making it a global contributor to biodiversity conservation and sustainable forest management.

Fareed Amin
Chairman
Iwokrama International Board of Trustees.

We were delighted to welcome our new Chairman, Mr. Fareed Amin, for his inaugural visit to the Iwokrama River Lodge in June.

During his visit, he met with staff, toured the Lodge's facilities, engaged with executives from the NRDDB and Fair View Village Council, and visited the Mill Site where our sustainable timber operations are conducted.

With over 30 years of public service experience in Canada, Mr. Amin brings a wealth of leadership expertise and has already begun key engagements to support Iwokrama's continued growth.

We look forward to his continued leadership as Board Chair!



Ecotourism

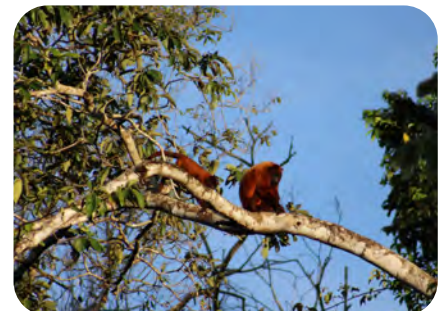
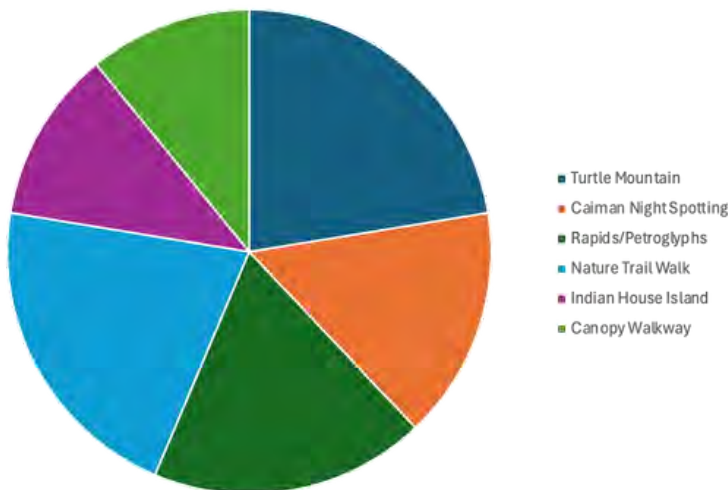


IWOKRAMA RIVER LODGE

Total No. of Guests 1500+	No of guests Turtle Mountain 29%	Guyanese >50% Total No of Guests	Leisure Tourists >50%
-------------------------------------	---	--	---------------------------------------

Most Popular Tours

The Turtle Mountain Hike remained the most popular tour, followed by the nearby Nature Trails and the Kurupukari Rapids and ancient Petroglyphs – some estimated to be 6,000 years old.



In a landmark year, Iwokrama and the team received three prestigious awards from

Guyana Tourism Authority

- **Tourism and Conservation Initiative Award** – Iwokrama International Centre for Rain Forest Conservation and Development

Visit Rupununi

- **Accommodation Provider of the Year (Lodge/Ranch)** – Iwokrama River Lodge and Research Centre
- **Tour Guide of the Year** – Marcie Ann Johnny, Assistant Tourism Manager and Master Guide

These honours reflect the consistent dedication of our operations and hospitality teams and the unwavering commitment of our community partners.



Ecotourism

Notable and VIP Visits

The Iwokrama Team was pleased to welcome all our guests this year, and we were especially delighted to host several distinguished visitors at the Iwokrama River Lodge. It was a privilege to highlight the importance of this unique ecosystem and to share the warm hospitality that makes Iwokrama so special.

July:

- Participants from the Global Biodiversity Alliance Summit (GBAS) including H.E. Martin K. Ngoga (Rwanda's Permanent Rep. to the UN), H.E. Saisnarine Singh (Guyana's Ambassador to the EU), H.E. Nicolas de Lacoste (French Ambassador to Guyana), Dr. Kim Dixon (PAHO/WHO Rep to Guyana), and Hon. Orlando Habet (Minister of Sustainable Development and Climate Change, Belize).
- A twelve-member forestry delegation from Liberia, organised by the GFC, visited as part of an exchange visit focused on forest governance, carbon initiatives, and sustainable forestry practices.

November:

- Minister Susan Rodrigues joined local media representatives for a North Rupununi Media Familiarisation Trip.

December:

- US Ambassador Nicole Theriot visited, hiking Turtle Mountain and exploring the Kurupukari Rapids and petroglyphs.

For more information on any of Iwokrama's Tours

Facebook: [Iwokrama International Centre](#)

[Iwokrama River Lodge](#)

Websites: [iwokramariverlodge.com](#)

[iwokrama.org](#)

Email us: tourism@iwokrama.org

Call us: 592.600.3504, 592.639.3216



Forestry

Timber Operations

Harvesting operations continued to struggle due to cash flow and equipment issues; however, annual production improved with 58% of the approved annual harvest completed. Milling operations were also impacted as annual production was down by about 10%. Iwokrama's partners are in the process of re-tooling the harvesting operation so production rates are expected to increase in 2026.

Post Harvest Surveys completed	Permanent Sample Plots	Forest Certification	Boundary Marking
20 felling blocks covering 1,224 Ha	8 new plots established Total: 26 plots	3rd Surveillance Audit Completed	44 km (2025) 519 km (2023-2025)

We are delighted to announce that Iwokrama was honored among 24 global nominees by the Forestry Division of the Food and Agriculture Organization (FAO) during the FAO Global Technical Recognition Ceremony. This recognition for **Sustainable forest management and biodiversity conservation research and practices** highlights Iwokrama's continued leadership and innovation in sustainable forest management and conservation, underscoring its role as a model for balancing environmental stewardship with community development.



Post Harvest Silvicultural Surveys

Post-harvest silvicultural surveys were completed in two closed Management Units to assess compliance with the GFC Code of Practice for Timber Harvesting.

The surveys covered 20 felling blocks spanning 1,224 Ha, with data collected from 21 one-ha sample plots.

The primary objectives were

- to evaluate harvesting operations and their environmental impacts, and
- to inform and improve future forest management planning.



Supported by the ExxonMobil Foundation through the Guyana Conservation Initiative

Forestry

Permanent Sample Plots

Eight new PSPs established in 2025, two in each of the 4 principal non-commercial forest types, which make up 26% of the total Iwokrama Forest.

PSPs are permanently demarcated areas of forest, typically of one ha, which are periodically remeasured.

PSPs

- provide long-term information on forest change,
- are the basis for growth and yield studies
- inform carbon storage capacity.

Supported by the ExxonMobil Foundation through the Guyana Conservation Initiative



Supported by the ExxonMobil Foundation through the Guyana Conservation Initiative

Forest Certification



The mark of responsible forestry

The 3rd surveillance audit for Iwokrama's Forest Stewardship Council™ (FSC™) Forest Management Certificate was carried out in October.

The final audit report is still pending; however, preliminary indications are that Iwokrama will receive one minor non-compliance and three observations.

Non-compliances are a normal part of any assessment / audit process and based on the severity of the non-compliance with the standard, it could prevent the applicant from being certified.

FSC™ Certification is a voluntary global forest certification system which promotes and validates good forest management. Maintenance of this certification requires annual surveillance audits and re-certification audits every 5 years.

Training and Learning Services

University Students

>55

Community Students

>125

Staff Training

>2

Interns

3

Certificate Courses & Study Tours

3

University Student Visits

Earth Expeditions, Miami University made its 14th annual visit to Iwokrama and Surama, this year under the theme "Guyana: Local Wisdom and Conservation."

Other university visits during the year included:

- Indiana University East
- Trent University
- University of Guyana



Community Student Visits

- Tiger Pond Primary School
- Bina Hill Students
- St. Ignatius Secondary
- Youth from Toka Village
- Ministry of Natural Resources Youth Apprentices. This Ministry of Natural Resources programme has been ongoing since 2017



Internships

Three students interned with Iwokrama this year.

- One from the University of Guyana, joined the Monitoring team and developed a comprehensive map of Iwokrama's trail network.
- Two interns from the Bina Hill Youth Learning Centre interned with the Accounts and Monitoring Units. Both expressed strong interest in continuing with Iwokrama and were subsequently hired.



Training and Learning Services



Biodiversity Assessment Training

Iwokrama collaborated with EMC Inc. to deliver a Biodiversity Assessment Training course in May. Facilitated by Dr. Frank Clarke, the course covered design and planning, field methods for flora and fauna, data analysis and reporting.

Seventeen participants attended, representing Iwokrama, EMC Inc., the Environmental Protection Agency, and the Protected Areas Commission.



GMCS- Region 1 Study Tour

In November, Iwokrama welcomed 10 participants associated with the Guyana Marine Conservation Society. The tour focused specifically on Iwokrama's Monitoring Programme.

Litter Prevention Warden Training

Iwokrama partnered with the Environmental Protection Agency to deliver Litter Prevention Warden training. Twenty persons were trained, drawn from Iwokrama staff, Fair View Village, and the Guyana Police Force. The initiative aims to address the increase in littering along the Iwokrama road corridor, with plans to expand the training to the North Rupununi and Lethem.



Internal Staff Training

- The Guyana Fire Service conducted fire safety training sessions at the Iwokrama River Lodge and Mill Site. This annual session is key to providing staff with practical fire response skills.
- Hospitality Training: Food and Beverage was provided for River Lodge staff and participants from Fair View Village, Indian House Island, and Michelle's Island. Training was facilitated by Michael Patterson, Tourism and Assistant Operations Manager.



Community Engagement



North Rupununi District Development Board (NRDDB)

The NRDDB holds quarterly meetings, with at least one meeting held at the Iwokrama River Lodge. This year Iwokrama hosted the May Meeting bringing together community leaders and partners, to review ongoing projects, plan future initiatives.

Radio Paiwomak

Radio Paiwomak, Guyana's first community-owned radio station celebrated its 25th anniversary, marking a quarter-century as a vital communication lifeline for the North Rupununi. Iwokrama, a proud partner from the start, congratulates the NRDDB on this milestone. The station now partners with NCN, continuing to broadcast NRDDB meetings and conservation messaging.

Bina Hill Outreach

In November, the Iwokrama Monitoring Team held an outreach session at the Bina Hill Institute sharing insights on Iwokrama's monitoring programme and sparking lively discussion on conservation and environmental monitoring.

Fair View Village Meeting

On December 1, Iwokrama attended Fair View's Public Meeting. Discussions focused on tourism opportunities, while Dr. Thomas (Director, Resource Management and Training) engaged community members on the issue of illegal mining in the Siparuni area, reaffirming Iwokrama's zero-tolerance stance on such activities.

Supported by the ExxonMobil Foundation through the Guyana Conservation Initiative

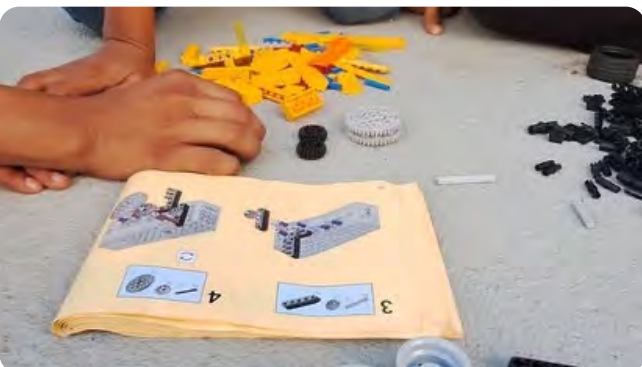
Community Engagement

18 Clubs	400+ Youth	7 - 24 Yrs
Education Support		
400+ Solid Waste Management	375+ STEM Robotics	300+ Wildlife Club Festival

Skills Training
Wildlife Identification
Bird Watching
Environmental Monitoring
Public Speaking and Mentorship

In January, the NRDDDB welcomed a team from ExxonMobil Guyana, including President Alistair Routledge and other senior representatives. The team met with the NRDDDB Executive and Wildlife Club members and learned about club projects. They also connected with the Makushi Research Unit and toured Radio Paiwomak's recording booth.

To mark the occasion, Iwokrama, the NRDDDB, and the Wildlife Clubs launched two new publications: Conservation Canvasses, celebrating hand-painted banners from an earlier Wildlife Club Festival, and Wildlife Wonders, a brand-new conservation board game.



Wildlife Clubs

Iwokrama continued to engage the Wildlife Clubs through training, outreach, and field activities, strengthening youth leadership, environmental education, and community-based conservation.

A key highlight was the North Rupununi Wildlife Club Festival, which brought together all 18 clubs under the theme **“Innovate, Preserve and Protect the Future of our Culture and Nature.”** The festival allowed clubs to connect and showcase their knowledge through environmental quizzes, cultural performances, art and STEM science projects.

Other activities across the year included birdwatching, wildlife identification, environmental monitoring, robotics STEM training, and solid waste management

Supported by the ExxonMobil Foundation through the Guyana Conservation Initiative

Monitoring



Biophysical, Environmental and Boundary

Monitoring remains a core component of Iwokrama's science programme. Using an interdisciplinary, STEM-based environmental science approach which integrates ecology, geology, biology, and chemistry. Iwokrama, together with its community partners, assesses environmental conditions, identifies potential impacts, and works to reduce the risk of long-term environmental degradation.

Monitoring: Road, River, Rainfall, Air Quality

- Rangers conducted road infrastructure, wildlife, and water quality monitoring along the 72 km stretch of the Linden-Lethem Road that passes through the Iwokrama Forest.
- River Monitoring was completed upstream and downstream of the Essequibo River to examine biodiversity and water quality.
- New rain gauges were installed at Corkwood Ranger Station and the Iwokrama River Lodge to improve rainfall monitoring, while air quality monitoring was conducted at the Mill Site in collaboration with the Environmental Protection Agency.



Boundary Marking and Monitoring

While the boundaries of the Iwokrama Forest are defined in the Iwokrama Act they were not physically marked on the ground, making monitoring difficult in some remote areas, particularly along the southern boundary.

To address this, Iwokrama began installing high-visibility boundary signs and markings in 2023 along riverine and southern sections. The work continued through 2024 and was completed in 2025 with additional marking in the southeast and southwest boundaries, including areas overlapping community timber concessions.

In total, approximately 519 km of forest boundary were marked, strengthening monitoring, reducing illegal incursions, and supporting sustainable forest management.



Supported by the ExxonMobil Foundation through the Guyana Conservation Initiative

Monitoring

Illegal Mining Enforcement

Illegal gold mining remained the main monitoring challenge in 2025. Enforcement activities intensified through collaboration with the Ministry of Natural Resources, the Guyana Geology and Mines Commission, the Guyana Police Force, and the Protected Areas Commission.

On December 10, two Brazilian nationals and one Venezuelan were arrested following a successful enforcement mission. The trio was remanded and a first court date was set for January 2026.

Iwokrama continues to remind all persons that the Iwokrama Forest is a protected area and that those found engaging in illegal activities will face the full force of the law.

Sea Turtle Monitoring Study Tour

Senior Ranger Havan Smith participated in the Shell Beach Sea Turtle Monitoring Programme, through Iwokrama's ongoing partnership with the Protected Areas Commission. This partnership has now supported six Iwokrama staff and one volunteer over the past five years.

Fair View Wildlife Club Monitoring

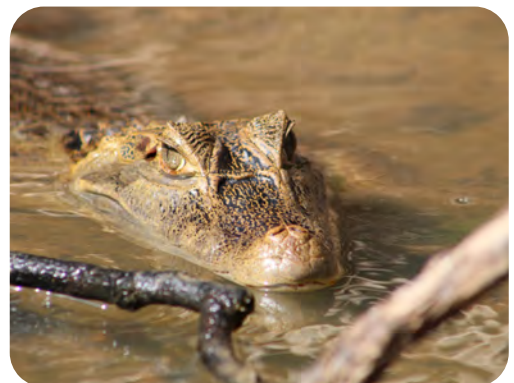
The Monitoring team continued its monthly engagement with the Fair View Wildlife Club, focusing on birdwatching and litter clean-up. The team also visited the Rewa Wildlife Club in December to exchange experiences and strengthen the monitoring network across communities.

Community Co-Monitoring

Iwokrama continued partnering with Surama, Apoteri, and Rewa villages, for border monitoring. Support included fuel and equipment.

Patrols mostly encountered subsistence fishers with wildlife sightings including powis, giant river otters, black caiman, arapaima, and monkeys.

The communities remain committed to co-monitoring, strengthening their ability to protect their lands and deter illegal activities



Supported by the ExxonMobil Foundation through the Guyana Conservation Initiative

Science and Research



MoU with Sophia Point

Rainforest Research Centre

Iwokrama signed a Memorandum of Understanding with Sophia Point Rainforest Research Centre marking a new phase of collaboration for biodiversity conservation, scientific research, and climate resilience.

The partnership will strengthen environmental education, support Guyana's Low Carbon Development Strategy 2030, and build capacity for sustainable forest management.

Iwokrama



Global Biodiversity Alliance Summit

Dr. Raquel Thomas, Director of Resource Management and Training, participated in a panel discussion at the Global Biodiversity Alliance Summit held in Georgetown, from July 23th -25th. The session, titled **“Nature’s Value: Biodiversity as a Driver of Bioeconomic Transformation,”** highlighted biodiversity’s role in sustainable economic growth.

Iwokrama’s contribution, **“Leveraging Biodiversity in the Business of Conservation,”** showcased how protected areas can serve as models for sustainable development, generating livelihoods while maintaining ecological integrity.



Science and Research

Collaboration with Drexel University

Iwokrama's partnership with Drexel University and the Academy of Natural Sciences, Philadelphia continued in 2025, focusing on student exchanges, collaborative research, and short-format field courses at the Iwokrama River Lodge.

A highlight of this collaboration is the Intensive Courses Abroad (ICAs) program—immersive courses combining lectures, guided field visits, and hands-on research—with the first ICA scheduled for March 2026.

The Bird Guide Training Course is confirmed for January 2026, offering a six-day program for 20 participants from government agencies, NGOs, universities, eco-lodges, and Indigenous communities across the North Rupununi.

Meanwhile, a reconnaissance visit for the Linden–Lethem Road Corridor Research, initially planned for November 2025, has been rescheduled to January 2026. The specialist team will assess water quality, ecological bioindicators, and forest and soil types along creek systems, generating baseline data to inform a broader research program in this ecologically significant corridor.

Supported by the ExxonMobil Foundation through the Guyana Conservation Initiative



Education, Awareness and Public Relations

16

Press releases issued

54

VIP and official visits

23

Exhibitions, conferences and outreach activities

Throughout the year Iwokrama maintained an active and wide-reaching public relations programme. The Centre issued 16 press releases covering milestone achievements in forest certification, conservation partnerships, enforcement operations, and community engagement. It hosted 54 official visitors including heads of state, ambassadors, and international delegations and participated in or organised 23 exhibitions, conferences, and outreach activities across Guyana and internationally.

School Outreach

School outreach continued, engaging students at both the primary and secondary levels. The team visited 10 schools across Guyana engaging with more than 300 students.

Participating schools

- St Angela's Primary,
- St Pius Primary,
- West Ruimveldt Primary,
- Paradise Primary,
- Golden Grove Primary,
- Kingston Secondary,
- Lusignan Primary,
- Peter's Hall Primary,
- Kuru Kururu Primary, and
- Silver Hill Primary.

Through interactive sessions, students explored Guyana's protected areas, learned about the Centre's conservation work, and examined the environmental impacts of littering.

These activities were designed to foster environmental awareness, encourage active participation, and inspire students to take responsibility for protecting their natural surroundings within their schools and throughout their communities.



Contact Information:

For any media queries please contact:

 publicrelations@iwokrama.org

 www.iwokrama.org

Supported by the ExxonMobil Foundation through the Guyana Conservation Initiative

Education, Awareness and Public Relations

Board Game: Wildlife Wonders:

In 2024, Iwokrama developed a board game - **Wildlife Wonders: Explore with the Giants of El Dorado**. A fresh spin on Snakes and Ladders, this new board game teaches youth about some of South America's largest and protected species.

Designed for schools, and youth, the game combines learning and fun, promoting environmental awareness and inspiring the next generation of conservation stewards.

The Game was launched in January



Conservation Canvasses: Hand-Painted Banners from the North Rupununi Wildlife Club Festival

Born from a standout moment at the 2023 Wildlife Club Festival in Annai, where clubs competed in a vibrant "Parade of Banners,"

This publication celebrates the creativity behind those works. Each club paired their banner with an original story, turning artwork into a unique conservation keepsake.

This publication was launched in January in Annai



Coming Soon

- 2026 Calendar – Featuring artwork from the 2025 Wildlife Club Festival, distribution of the calendar began in December.
- Iwokrama Apps – Two mobile apps are being developed - an Iwokrama App and digital version of the Wildlife Wonders Game set to launch in 2026.
- Coffee Table Book – A publication celebrating Iwokrama's history is in final production and will be launched in Q2 2026.



Supported by the ExxonMobil Foundation through the Guyana Conservation Initiative

Projects

In 2022, Iwokrama received a multi-year grant from the ExxonMobil Foundation - **the Guyana Conservation Initiative (GCI)** aimed at strengthening conservation efforts across both Guyana's coastal zones and hinterland regions. The initiative targets several interconnected priorities: protecting biodiversity, restoring and managing critical ecosystems, fostering sustainable livelihoods, safeguarding vulnerable species, and promoting environmental education.

Technical support for project implementation is provided by Environmental Management Consultants Inc. (EMC). Beneficiary organisations include the Guyana Tourism Authority, Guyana Marine Conservation Society, National Agricultural Research and Extension Institute, EMC Foundation, Protected Areas Commission, Drexel University and the North Rupununi District Development Board.

A summary of the Coastal Activities is presented below

Livelihood Initiatives

Risk & Emergency Management	14 participants trained in first aid, man-overboard drills, and water safety (March).
Culinary Arts Training	14 participants from 8 communities trained in cooking, hygiene, menu design, and customer service (June).
Tourism Operations & Management	79 participants from 4 villages trained in booking, logistics, guest hosting, and customer engagement (June–August).
Indigenous Leadership Capacity	16 participants trained in leadership, strategic management, and community decision-making (August).
Tour Guiding & Interpretation	26 participants across 2 villages trained in responsible tourism and itinerary planning (Oct–Nov).
Mangrove Tour Guiding	17 participants trained in mangrove ecology, bird ID, and eco-tour guiding at NAREI (November).



Projects

Species Conservation

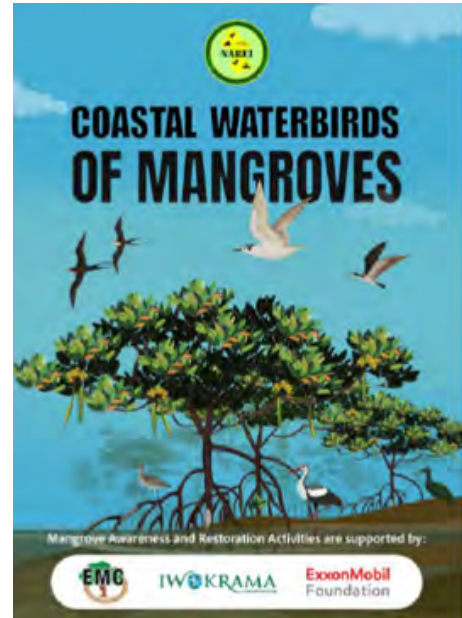
Season	February – September, daily and nightly patrols at Almond and Tiger Beaches
Total Nests Recorded	321 nests across 4 species: Green Turtle (296), Leatherback (19), Hawksbill (4), Olive Ridley (2).
Nest Relocation Rate	100% of all recorded nests successfully relocated, reducing risks from erosion, predation, and poaching



Projects

Education and Awareness

<p>Publications</p>	<p>New publications:</p> <ul style="list-style-type: none"> • Coastal Waterbirds Guide • Mangrove Forest Guide, • Mangrove Programme Brochure, • Mangrove Brochure (reprinted)
<p>Videos & Animations</p>	<p>4 audio-visual resources produced:</p> <ul style="list-style-type: none"> • Mangroves – Guardians of Guyana's Coast (video); • Mangroves and Birds of the BMP (video); • 3 animations for Region 1 schools (Cindy and the Sea Turtles; Cindy and the Fishes of the BMP; A Glimpse of Warrau Culture).
<p>Teacher Resource Manual</p>	<p>The Mangroves – Our Natural Sea Defence completed for secondary schools; printing scheduled for Q1 2026.</p>
<p>Mangrove Library Corners</p>	<p>11 interactive corners established across 7 regions in schools and national libraries,</p>
<p>Barima Mora Passage Education Curriculum</p>	<p>Curriculum and Teacher's Toolkit delivered to Region 1 pilot schools, integrating Indigenous knowledge, mangrove ecology, and marine biodiversity.</p>



Mangrove Forests

Mangroves are tropical plants which are found along much of the world's tropical coasts. They grow in loose, wet soils, and in salt water, and are periodically submerged by tidal flows. Their distribution throughout the world is affected by climate, salinity (the measure of the dissolved salt content of the water), fluctuation of the tides, type of soil in the area, and, more recently, by development of tidal wetlands for residential and industrial use.

Mangroves are found in 123 countries globally and cover a total of 152,000 km². Current estimates of Guyana's mangrove extent is **21,971 hectares (NABEI, 2022)**.

Mangroves grow in tropical and subtropical zones. These areas are tough places for plants to grow. During low tides intertidal zones are exposed to air. Intertidal zones are flooded frequently and their soils are poor. But, mangroves survive and thrive in these harsh conditions. Groups of mangroves and other plants that live together in these conditions are called mangrove swamps, mangrove forests and sometimes simply **mangot**.

Importance of mangroves:

- Stabilizes shorelines: Mangroves help to hold the soil together and prevent coastal erosion. They act as a buffer, breaking the force of the waves as they hit the shore.
- Mangroves help to shield island areas during storms.
- Mangroves trap sediments and breakdown pollutants.
- Serve as a source of food for the aquatic life in the rivers and the shallow areas of the coasts.
- Provide habitats for numerous animal species (shrimp for juvenile fish, shrimp and crab).
- Mangroves play an important role in climate change mitigation as they can sequester a approximately five times more carbon than

Actions that will help save Guyana's mangroves

- Avoid grazing animals in mangrove areas.
- Avoid carvies, cutting of trees for fuel wood, construction posts, logs, rafts and poles for fishing nets.
- Harvest timbers in the amount needed and with responsible harvesting techniques.
- Avoid dumping garbage at mangrove sites.
- Avoid pulling fishing boats through the mangrove forest.
- Discard from setting fire to the mangrove forests.
- Try to monitor or deter from harvesting migratory birds in order to sustain biodiversity.
- Talk to other persons about avoiding the above bad practices.
- Participate in community activities to help protect and restore mangroves in your area.



NABEI
National Agricultural Research and Extension Institute (NABEI)

Agriculture Road, Mon Repos, East Coast Demerara
+92 220-2843
masacretanar@gmail.com
www.nabei.org.gy

National Agricultural Research & Extension Institute
Guyana Mangrove Restoration Project

MANGROVE FOREST GUIDE

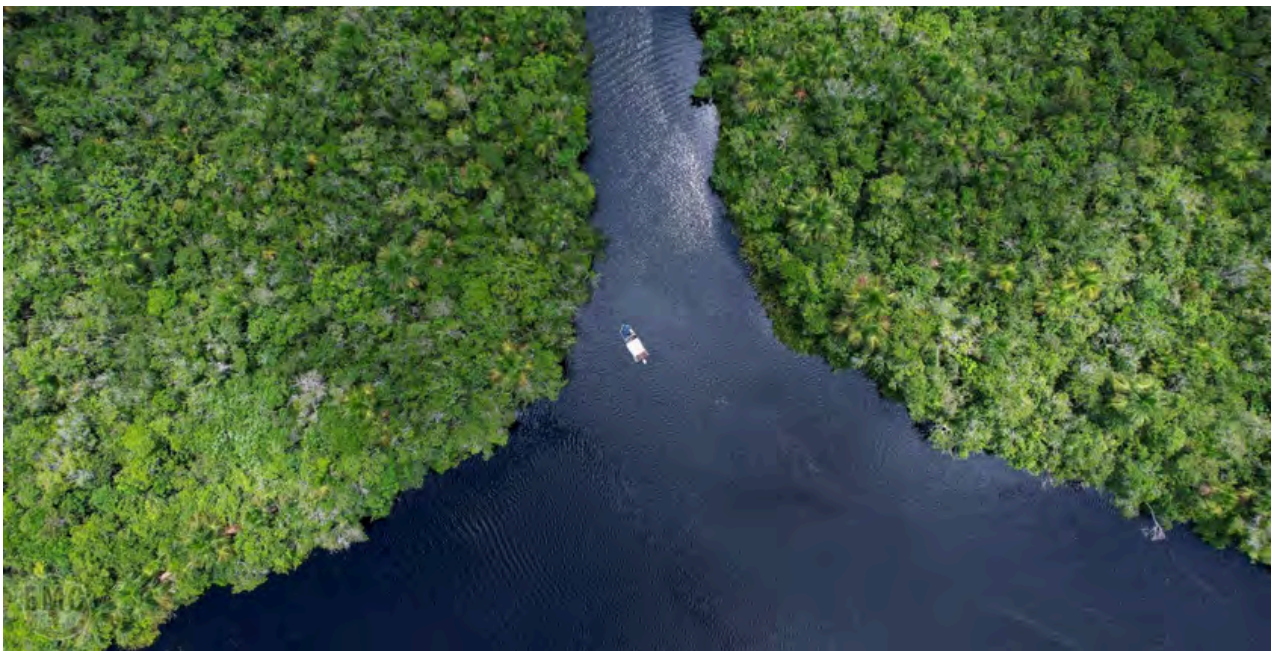


Projects



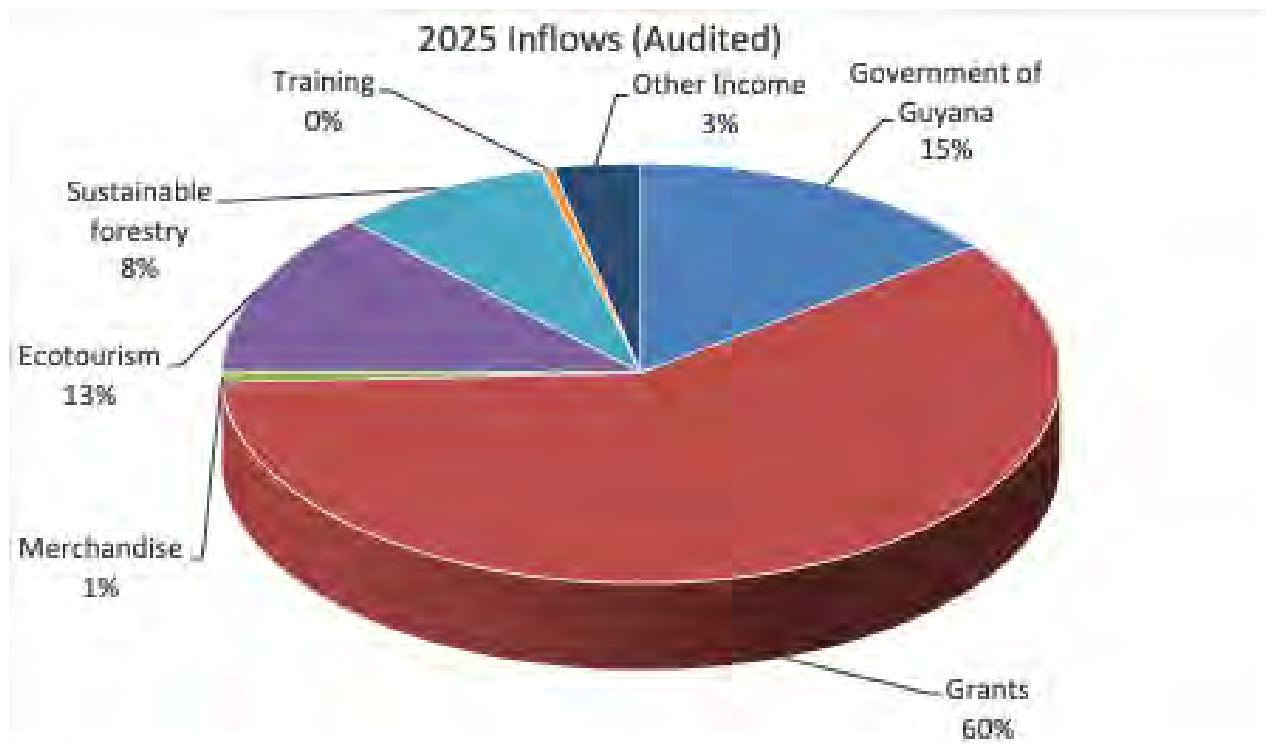
Ecosystem Restoration and Management

Mahaica Watershed Monitoring	Continued collaboration with Drexel University and the Academy of Natural Sciences; activities included water quality, hydrology and biodiversity surveys.
Advanced Monitoring Techniques	eDNA sampling, drone mapping, river surveying, and water-level pressure sensors deployed; wet and dry-season Rapid Biodiversity Assessments completed.
GIS & Reporting	GIS coverage enhanced; progress made toward a State of the Watershed Report and an Integrated Watershed Management System.



Financials

The Centre's financial position for the year reflects both the progress made across our programmes and the external challenges encountered along the way. Despite this, we are pleased to report an unqualified audit and a continued ability to deliver on our core mandate. The charts and figures presented on the following pages offer an overview of our income and expenditure for the year, reflecting our ongoing efforts to advance our mission of rainforest conservation and sustainable development.



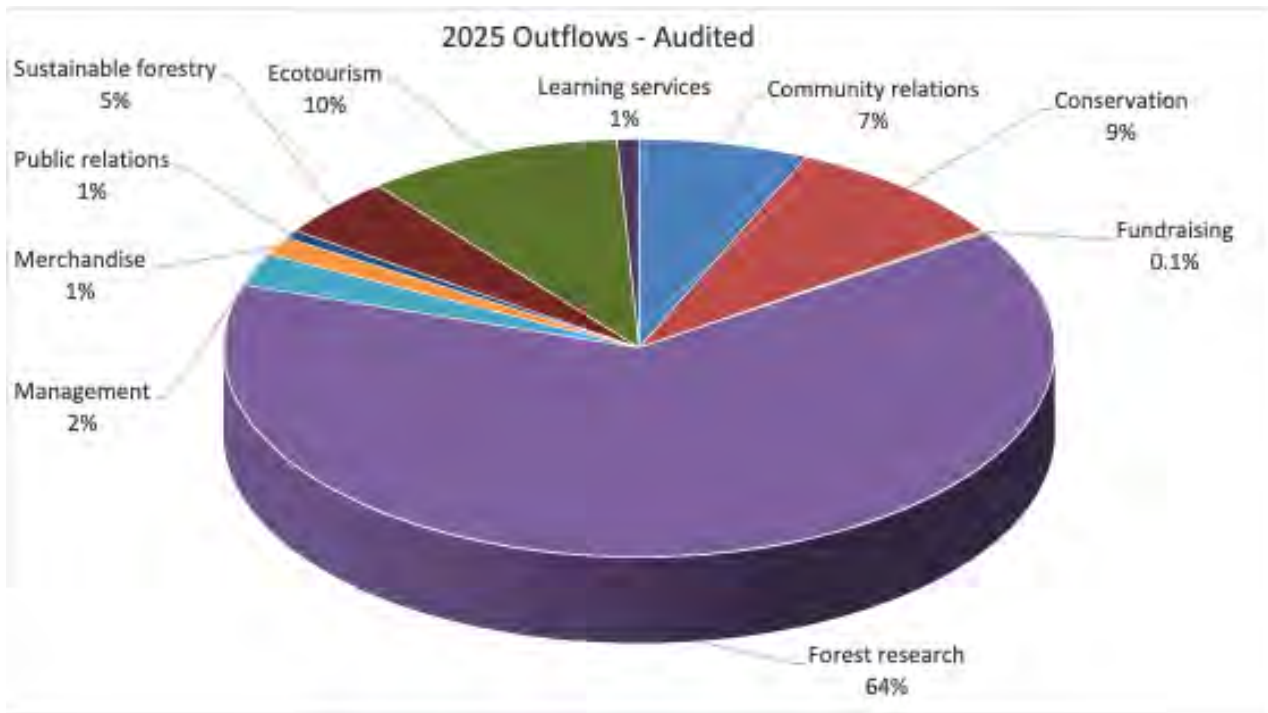
Income

Total income for 2025 increased to USD4.2M from USD3.1M in 2024 mainly from an increase in grant funding which moved from USD1.7M in 2024 to USD2.5M in 2025. Both of the businesses, sustainable forestry and sustainable tourism beat their 2024 figures (USD81,235, USD480,119 respectively) by earning USD350,475 and USD537,892 respectively as the operations continued to build capacity. We remain grateful to the Government of Guyana for providing an annual subvention to support core funding to the Centre.

Administration: Accounts, Procurement and Logistics

2025 has been a productive year for the Centre's administrative operations. The administration team kept the organization running smoothly, coordinating across departments and ensuring the systems underpinning the Centre's work remained efficient and responsive. In procurement and logistics, meaningful progress in supply-chain operations and transportation efficiency has strengthened overall performance. The fleet has remained well-maintained and fully operational with the near completion of the Linden-Mabura roadway improving access to the IRL. The Accounts Team has kept finances in good order, maintaining accurate records, staying compliant, and producing the financial statements that support sound decision-making across the organization.

Financials



Expenditure

Overall operating expenses in 2025 (USD3.98M) were higher than those in 2024 (USD3.12M) as a result of increased project related activity. Although there was an increase in all the programme areas, a noticeable increase was seen in forestry research which moved from USD1.5M in 2024 to USD2.5M (64% of total expenditure) in 2025 attributed to by the increase in project related activity in that area.

DUNS Registration

Iwokrama has renewed its DUNS registration, ensuring its recognition in global business and development networks.

This unique identifier is important because it enhances credibility, improves access to international funding and partnerships, and strengthens accountability and transparency

for more info:

<https://www.dunsguide.com/company/4947961e0e6da62782729239caffb4c7/iwokrama-international-centre-for-rain-forest-conservation-and-development#scores>



Partners

- Africa, Caribbean, and Pacific Group of States
- Amazon Conservation Team, Suriname
- Anton de Kon University, Suriname
- Banks DIH Ltd.
- Bina Hill Institute
- Boise State University
- Brookfield Zoo, Chicago
- British Chamber of Commerce Guyana
- Calgary Zoo
- Caribbean Youth Environment Network
- Center for International Forestry Research
- Chicago Zoological Society
- Commonwealth Secretariat
- Community and Tourism Services Inc.
- Conservation International – Guyana
- Darwin Initiative
- Drexel University
- Earth Expeditions – Miami University
- Environmental Management Consultants Inc.
- Environmental Protection Agency – Guyana
- European Union
- ExxonMobil Foundation
- ExxonMobil Guyana
- Farfan and Mendes Ltd.
- Food and Agriculture Organisation
- Forestry Training Centre Inc.
- German Government / GIZ
- Global Canopy Programme (Oxford)
- Guyana Forestry Commission
- Guyana Geology and Mines Commission
- Guyana Marine Conservation Society
- Guyana Police Force
- Guyana School of Agriculture
- Guyana Shield Initiative
- Guyana Tourism Authority
- Guyana Wildlife Conservation and Management Commission
- Indiana University East
- Inter-American Development Bank
- International Tropical Timber Organisation
- International Union for Conservation of Nature
- Lyell Centre, Heriot Watt University



Partners

- Makushi Research Unit
- McArthur Foundation
- Mings Products and Services
- Ministry of Amerindian Affairs
- Ministry of Natural Resources
- Ministry of Public Works
- Ministry of Tourism
- National Agricultural Research & Extension Institute
- National Audubon Society
- North Rupununi District Development Board
- Office of Climate Change
- Office of King Charles III
- Panthera
- Protected Areas Commission
- Radio Paiwomak
- Rain Forest Alliance
- Royal Holloway, University of London
- Smithsonian Conservation Biology Institute
- Sophia Point Rainforest Research Centre
- STEM Guyana
- The British Government
- The Canadian High Commission
- The Embassy of the United States
- The Government of Guyana
- The World Bank
- Tourism and Hospitality Association of Guyana
- Trent University
- United Nations Development Programme
- University of Guyana
- University of Kent
- University of Oxford
- Visit Rupununi
- Wilderness Explorers
- World Wildlife Fund



New Publications

Iwokrama continues to advance its mission of conservation and sustainable forest management through the production and dissemination of scientific and educational publications. These works span a range of disciplines including biodiversity, forest ecology, wildlife management, and community development and reflect the Centre's role as a leading research institution in the Guiana Shield region.

The publications listed below represent Iwokrama's most recent contributions to the body of knowledge supporting tropical rainforest conservation in Guyana and the wider world.

01

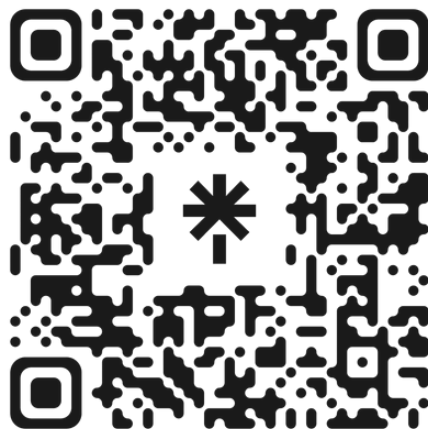
Baker, T. R. et al (2025). *Large range sizes link fast life histories with high species richness across wet tropical tree floras*. Scientific Reports, 15:4695 (Iwokrama contributing author Anand Roopsind)

02

Esquivel-Muelbert, A.; Rebecca Banbury Morgan; Roel Brienen; Emanuel Gloor; Simon L. Lewis; Kyle G. Dexter et al (2025). *Increasing tree size across Amazonia*. Nature Plants. (Iwokrama contributing author Dr Raquel Thomas)

03

Shelene Gomes, Patricia Fredericks, Dane Gobin and Michael Williams (2025). *Conservation, Forest based Businesses, and Livelihoods in the North Rupununi, Guyana*. The Iwokrama International Centre for Rain Forest Conservation and Development (IIC/The Centre) & the North Rupununi District Development Board (NRDDB) (Unpublished)



IW**KRAMA**

**49 Barrack & High Streets, Kingston,
Georgetown**

Tel: 592.225.1504, 592.225.1186

iwokrama-general@iwokrama.org

www.iwokrama.org